

## AKT1

**Catalog Number:** 21274

**Gene Symbol:** AKT1, AKT, PKB, PKB-ALPHA, PRKBA, RAC, RAC-ALPHA

**Description:** Anti-AKT1 Rabbit Polyclonal Antibody

**Background:** AKT1 is one of 3 closely related serine/threonine-protein kinases (AKT1, AKT2 and AKT3) called the AKT kinase, and which regulate many processes including metabolism, proliferation, cell survival, growth and angiogenesis. Its function is mediated through serine and/or threonine phosphorylation of a range of downstream substrates. There are evidences that mutation or abnormal expression in AKT1 is associated with cancers.

**Immunogen:** Purified AKT1 protein, human origin.

**Tested applications:** ELISA, WB, IHC

**Recommended dilutions:**

ELISA: 1:1000-1:5000

WB: 1:100-1:1000

IHC: 1:50-1:200

**Concentration:** 0.2mg/ml

**Host:** Rabbit **Clonality:**

Polyclonal

**Purity:** Purified from serum

**Format:** Liquid

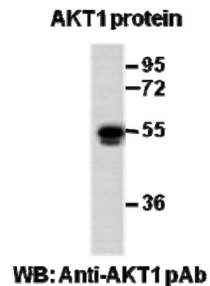
**Preservative:** No

**Constituents:** PBS (without Mg<sup>2+</sup> and Ca<sup>2+</sup>), pH 7.4, 150 mM NaCl, 50% glycerol

**Species Reactivity:** Recognizes AKT1 of vertebrates.

**Storage Conditions:** Store at -20°C. Avoid freeze / thaw cycles

Western blot:

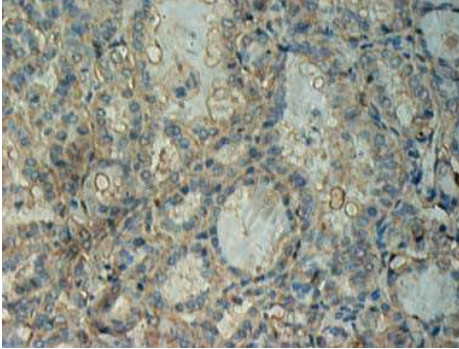


**Western blot analysis of recombinant AKT1 protein.**

Purified His-tagged AKT1 protein was blotted with anti-AKT1 rabbit polyclonal antibody (Cat. # 21274).

FOR RESEARCH USE ONLY. NOT FOR DIAGNOSTIC APPLICATIONS

## Immunohistochemistry:



Immunohistochemical analysis of paraffin-embedded human thyroid cancer tissue with anti-AKT1 polyclonal antibody (Cat. #21274). Tissue samples were fixed with formaldehyde and blocked with 1% serum for 15min at 37 °C. Antigen retrieval was by heat mediation in citrate buffer (pH6). Samples were then incubated with primary antibody (1:50 dilution) overnight at 4°C. HRP-conjugated Goat anti-mouse IgG (1:50 dilution) was used as secondary antibody.

---

**FOR RESEARCH USE ONLY. NOT FOR DIAGNOSTIC APPLICATIONS**